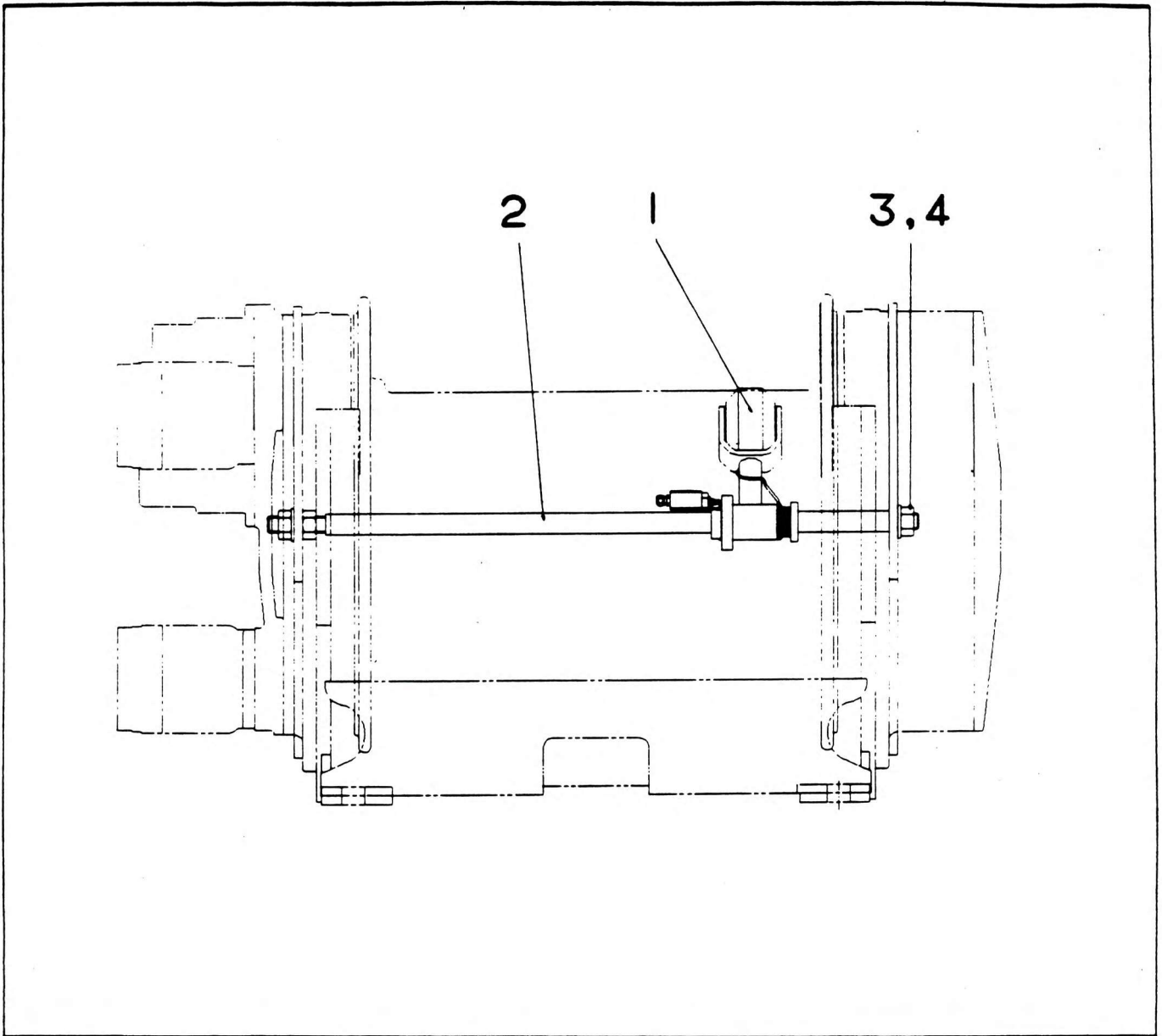


3RD WRAP INDICATOR INSTALL



| NO. | PART NO. | QTY. | DESCRIPTION | NO. | PART NO. | QTY. | DESCRIPTION |
|-----|--------------|------|----------------------------|-----|----------|------|-------------|
| 1 + | 7-486-990266 | 1 | Hoist Monitoring Indicator | | | | |
| 2 | 6-610-990263 | 1 | Shaft - 3rd Wrap Indicator | | | | |
| 3 | 7-661-290003 | 3 | Nut | | | | |
| 4 | 7-951-290014 | 2 | Washer Plain | | | | |

+ See further breakdown in this group